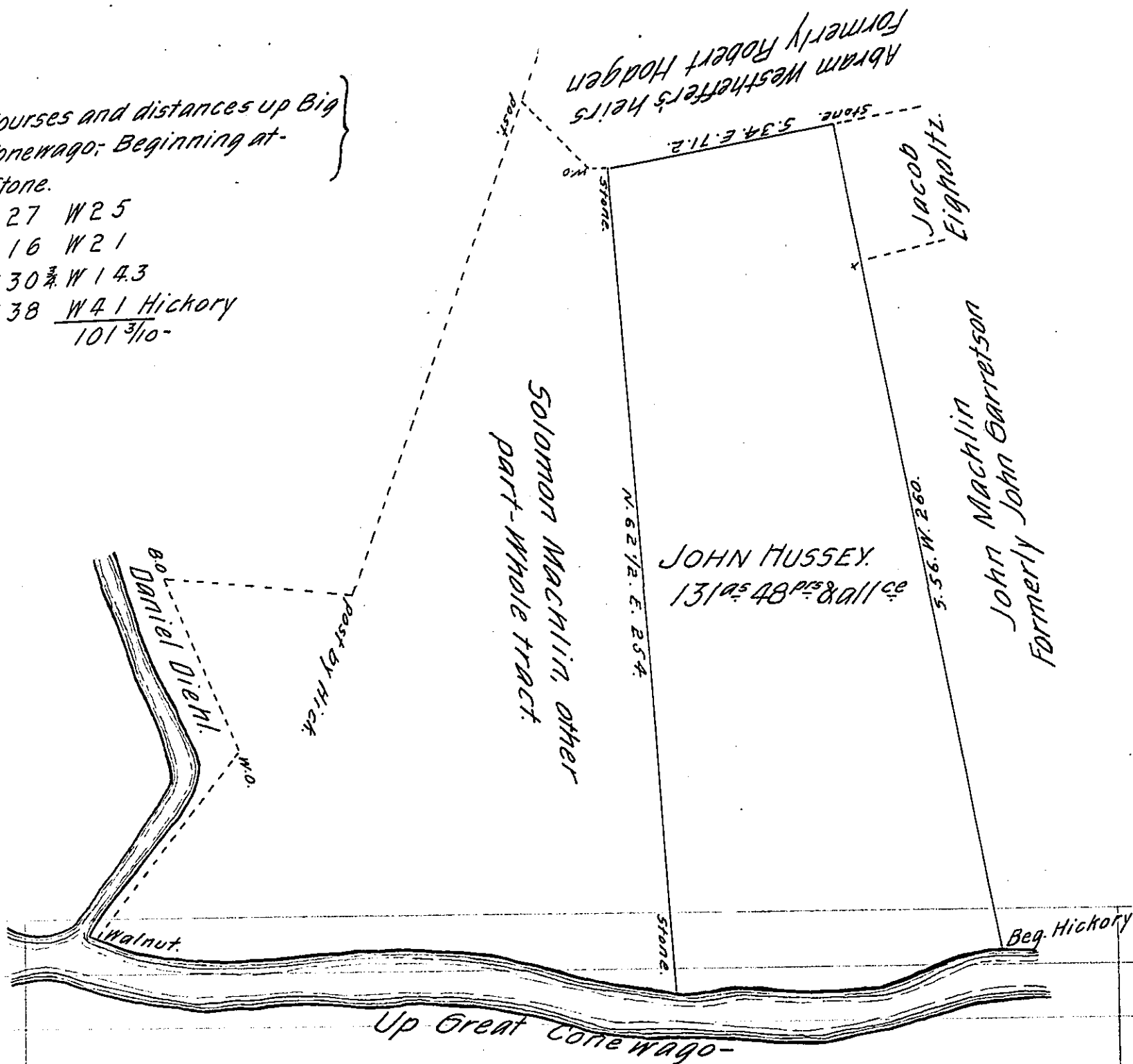


Courses and distances up Big  
Conewago: Beginning at-  
Stone.

- N 27 W 25
- N 16 W 21
- N 30  $\frac{1}{2}$  W 14.3
- N 38  $\frac{1}{2}$  W 41 Hickory
- 101  $\frac{3}{10}$ -



Situate in Conewago Township, York County, containing One hundred and thirty one acres, forty eight perches and allowance of six per cent, part of 280<sup>ac</sup> - 131<sup>ac</sup> & allowance. Surveyed by Thomas Cookson, then D.S. on the 16<sup>th</sup> day of March 1746, in pursuance of a warrant for-<sup>ac</sup> granted to John Hussey dated 29<sup>th</sup> April 1745. Divided March 13<sup>th</sup> 1823, for Daniel Brua-present owner of said part.

Jacob Kirk, Jr. D.S.

Samuel Cochran, Esq. S.G. }  
 T. say 20<sup>th</sup> March 1744.

IN TESTIMONY that the above is a copy of the original remaining on file in the Department of Internal Affairs of Pennsylvania, made conformably to an Act of Assembly approved the 16th day of February, 1833, I have hereunto set my Hand and caused the Seal of said Department to be affixed at Harrisburg, this sixth day of April 1905.

*James D. Brown*  
 Secretary of Internal Affairs.